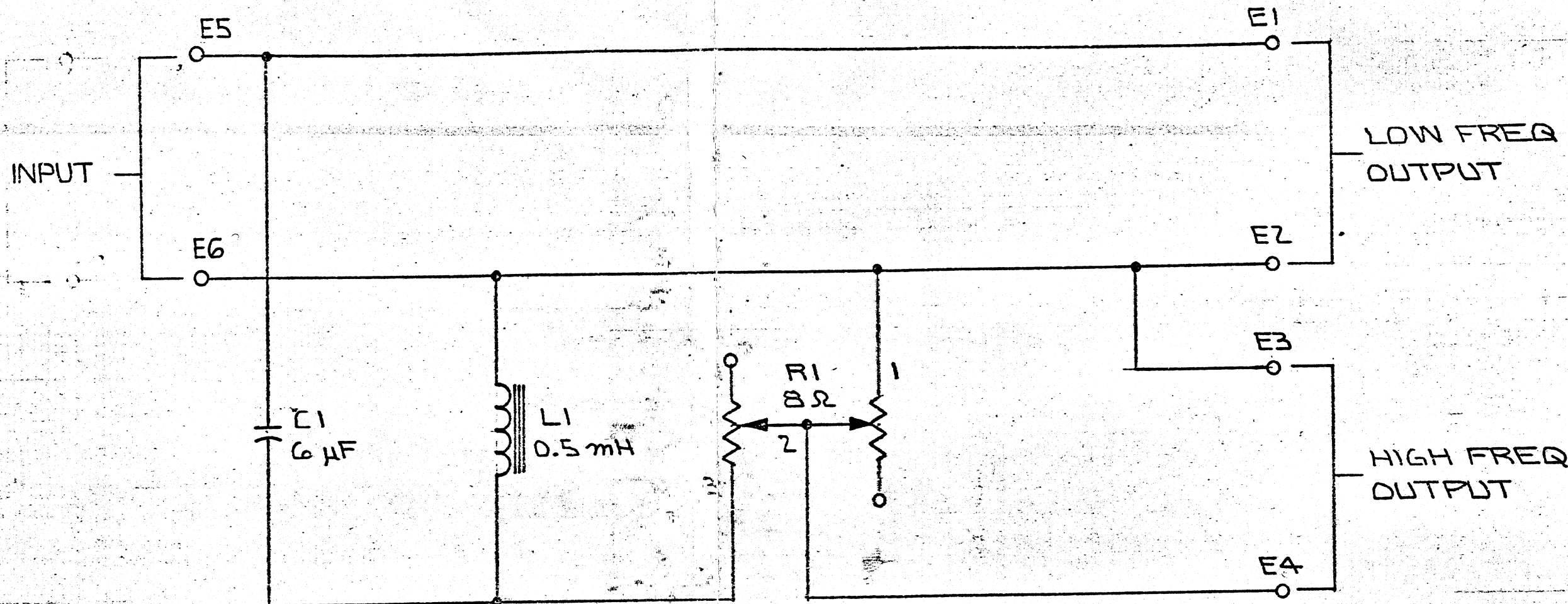


THESE DRAWINGS AND SPECIFICATIONS ARE THE PROPERTY OF JAMES B. LANSING SOUND INC. THEY ARE ISSUED IN STRICT CONFIDENCE AND SHALL NOT BE REPRODUCED, COPIED, OR USED AS THE BASIS FOR MANUFACTURE OR SALE OF APPARATUS WITHOUT PERMISSION.

**NOTICE**

THE FOLLOWING DCR'S ARE OUTSTANDING AGAINST THIS DRAWING.



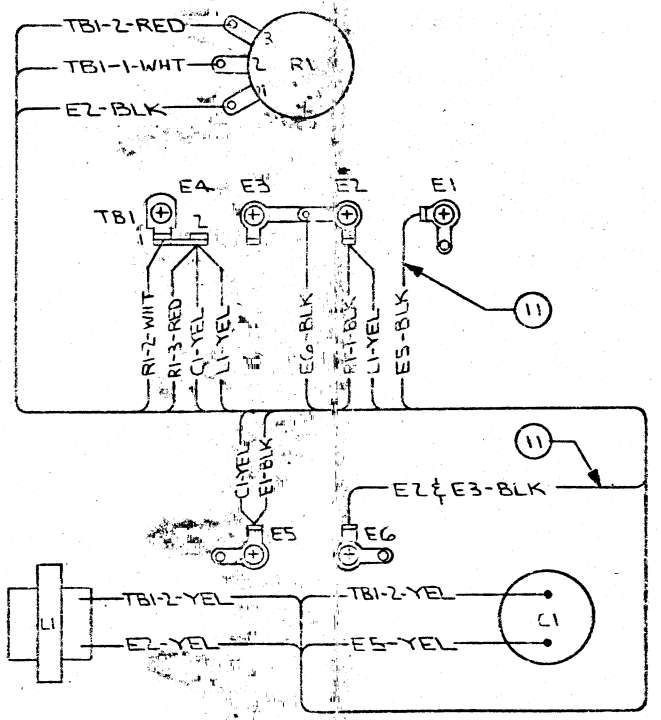
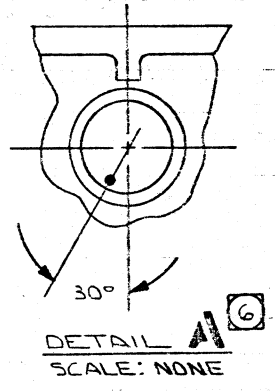
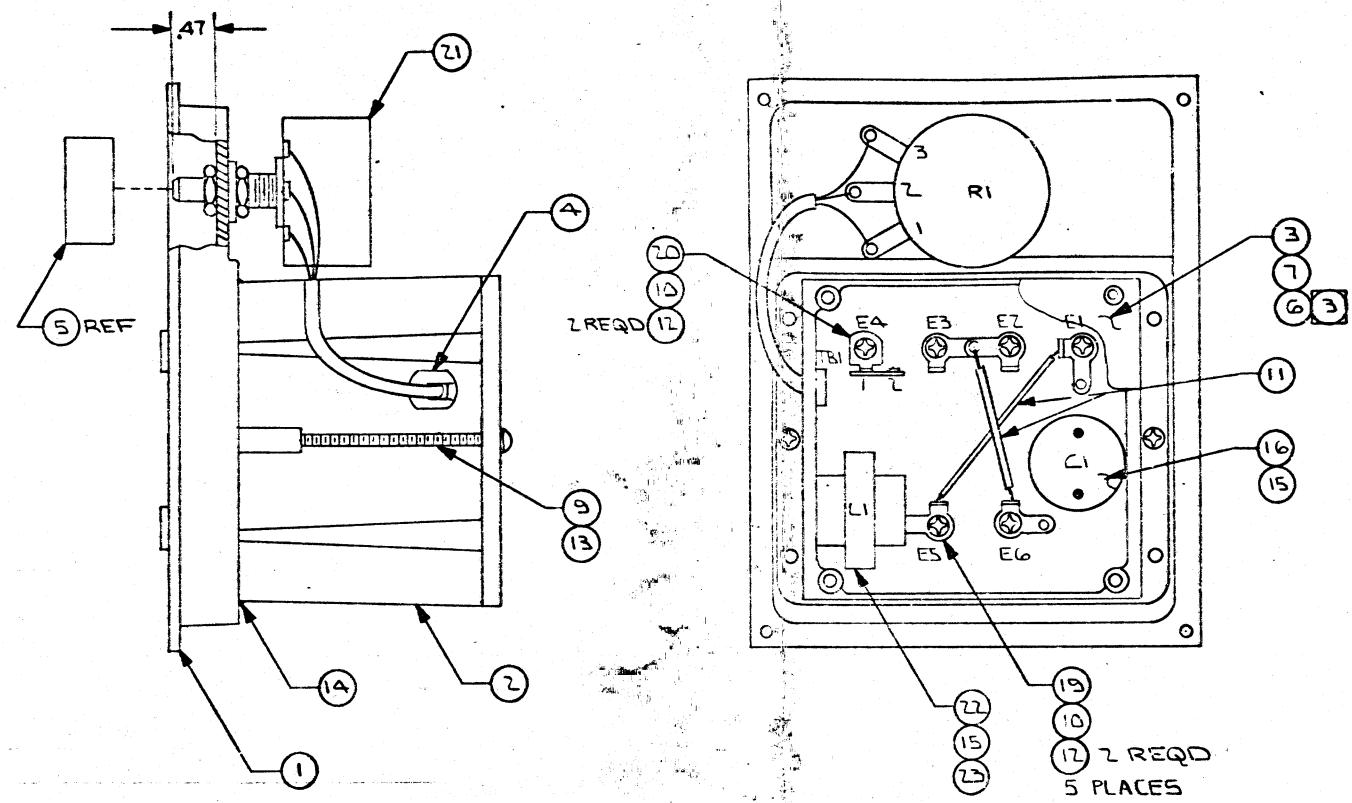
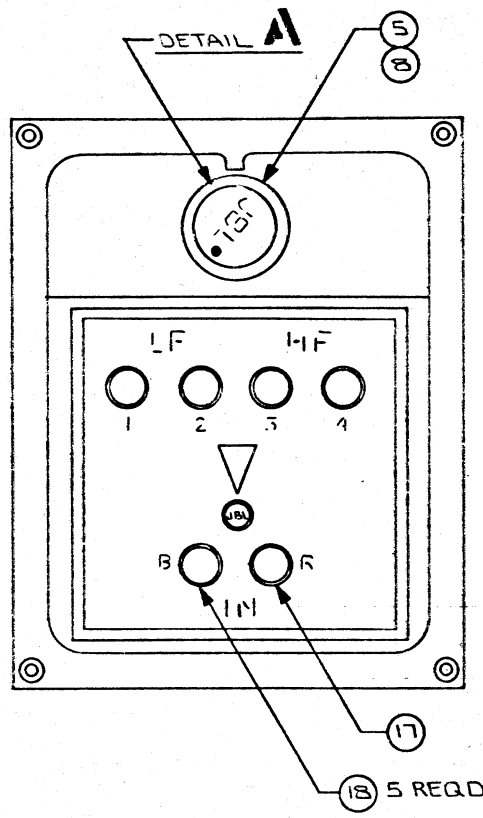
1. FOR WIRING DIAGRAM SEE DWG. 10320.

NOTES: (UNLESS OTHERWISE SPECIFIED)

REVISIONS				UNLESS OTHERWISE SPECIFIED DIMENSIONS ARE IN INCHES. BREAK SHARP EDGES - 015				DRAWN: 8/12/77 S. Hayman		JAMES B. LANSING SOUND INC. 20009		
6TB E REV & REDRAWN				DECIMALS: .XX ± 01 FRACTIONS: X/Y ± 1/32 ANGULAR: °				CHECK: 31 MAR 78 Allen Yetendorf		TITLE: SCHEMATIC-LX2-1		
G.T. 3 APR 78				TIR MATERIAL:				ENGR: 3 APR 78 Greg Walker		SIZE: B	DRAWING NUMBER: 10372	REV: E
DATE BY				TREATMENT:				APPR: 3 APR 78 D. B. Peterson		SCALE: X	WEIGHT: X	SHEET 1 OF 1
ECN	LET.	CHANGE	DATE	BY	QTY	MODEL	NEXT DWG	MACHINE FINISH: V		DO NOT SCALE DRAWING		
						LX2-1						

**NOTICE**

THE FOLLOWING DCR'S ARE OUTSTANDING AGAINST THIS DRAWING.



WIRING DIAGRAM

ITEM	PART NUMBER	DESCRIPTION	QTY	REMARKS
25	294548	BLUE DYE, DYKEM DX100	A/R	
24	414175	BLACK POWDER, ERIO J	A/R	
23	103245	SLEEVING, NO 14, YEL	1	7 IN TOTAL
22	13221	INDUCTANCE COIL, 0.5 MH	1	LI
21	13359	L-PAD ASSY	1	RI
20	10212	TERMINAL STRIP, 1 LUG, 1 TERM	1	TBI - E4
19	10241	SOLDER LUG, Y-TYPE	5	E1, E2, E3, E5, E6
18	10244	BINDING POST, BLK	5	E1 THRU E4, E6
17	10243	BINDING POST, RED	1	E5
16	10296	CAPACITOR, 6 μF	1	C1
15	501825	ADHESIVE - HOT MELT	A/R	
14	293685	CEMENT, BOSTIC, 4585	A/R	
13	10280	LOCKWASHER, INTERNAL, NO. 6	2	
12	10817	WASHER, INSULATING, NO. 6	12	
11	10298	WIRE, 20 AWG, BLK	2	
10	10811	SCREW, 6-32 x 3/8, PN HD, PH	6	
9	10281	SCREW, 6-32 x 2 1/4, RD HD, PH	2	
8	12961	SET SCREW, 6-32 x 1/4, SOC HD	1	
7	53673	RIVET	4	
6	57418	FOILCAL	1	MRD 57402
5	10293	KNOB	1	MRD 47178
4	12274	STRAIN RELIEF	1	
3	10302	BOTTOM LID	1	
2	10316	NETWORK CONTAINER	1	MRD 47077
1	12699	MOUNTING PLATE	1	MRD 47068

7. COMBINE ITEMS 14, 24 & 25 PER EDS 1004.

6. KNOB TO BE INSTALLED IN POSITION SHOWN WHEN POT RI IS IN A FULL COUNTER CLOCKWISE POSITION.

5. WIRE IDENT. CODE:  
 TBI-1-GRN/BLK  
 TRACE COLOR  
 WIRE COLOR  
 TERMINATION  
 DESTINATION

4. ASSEMBLE ITEM 2 TO ITEM 1 & SEAL UNIT ALL AROUND WITH ITEMS 14, 24 & 25.

3. CENTRALLY LOCATE ITEM 6 ON ITEM 3, FOILCAL SHALL BE RIGHT READING WHEN POT RI IS ABOVE.

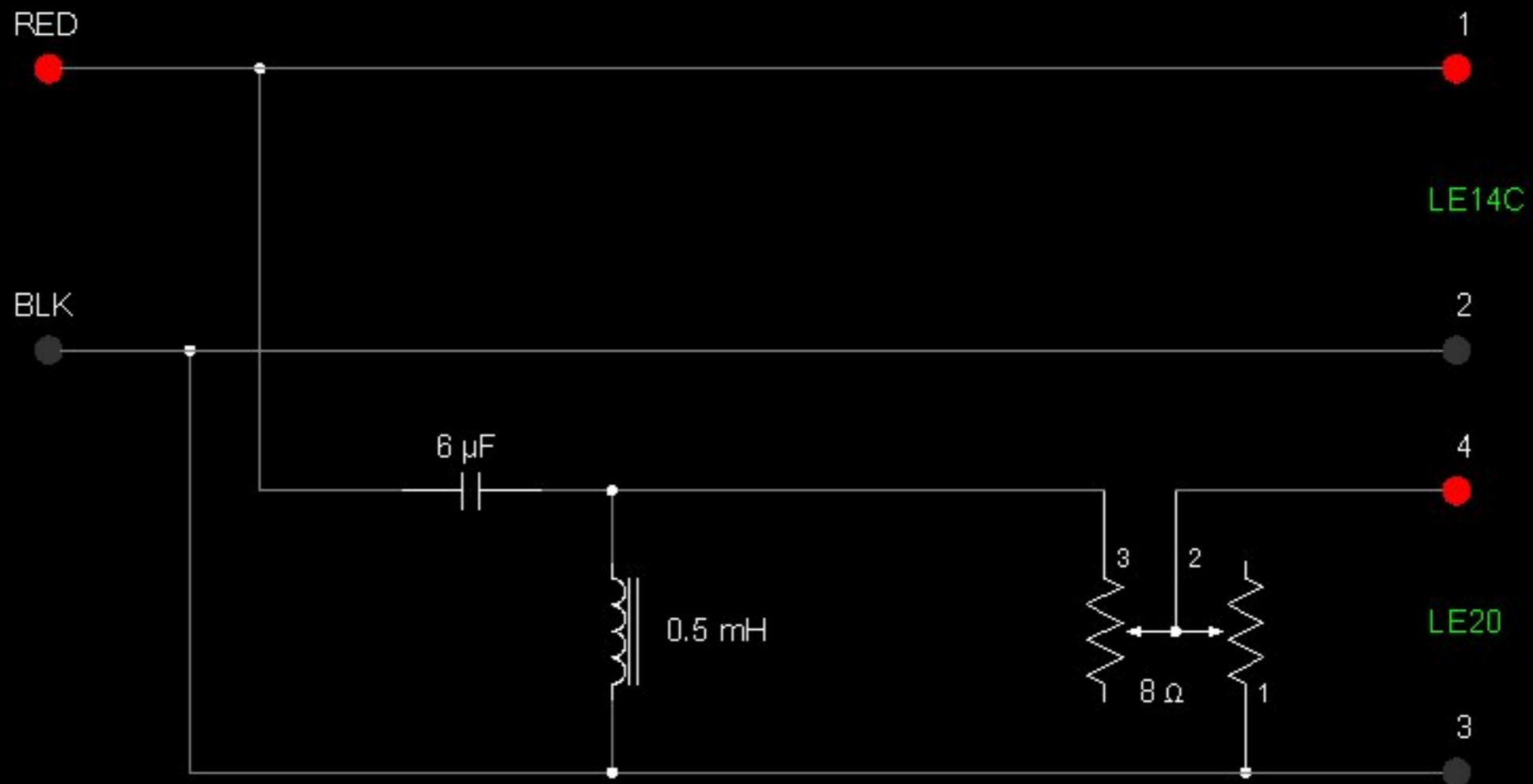
2. FOR ENGINEERING SPEC SEE E.S.T. 1022

1. FOR SCHEMATIC SEE DWG 10372.

NOTES: (UNLESS OTHERWISE SPECIFIED)

BILL OF MATERIAL

REVISIONS	UNLESS OTHERWISE SPECIFIED DIMENSIONS ARE IN INCHES. BREAK SHARP EDGES .015	DRAWN: 3/12/77 S. H. B. 1000
1	DECIMALS .XX .XXX .005 FRACTIONS 1/32 3/32 ANGULAR	CHECKED: 3/12/77 S. H. B. 1000
2	TREATMENT: TIR MATERIAL: 1000	DESIGN: MFD ITEM WIRING DIAGRAM-LX2-1
3	DATE: 3/12/77 BY: LKZ	ENGR: S. H. B.
4	APP: REV & REDRAWN	SIZE: D
5	CHANGE DATE BY APPLICATION	DRAWING NUMBER: 10370
6		REV: 7
7		SCALE: FULL
8		WEIGHT: 7
9		SHEET: 1 OF 1



JBL Model LX2-1  
 Frequency Dividing Network

~ 2000 Hz  
 ~ 1974